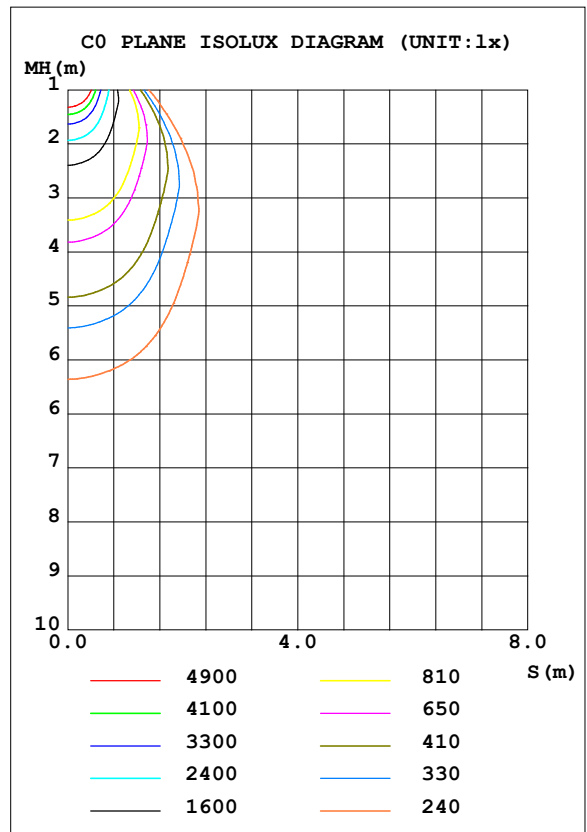
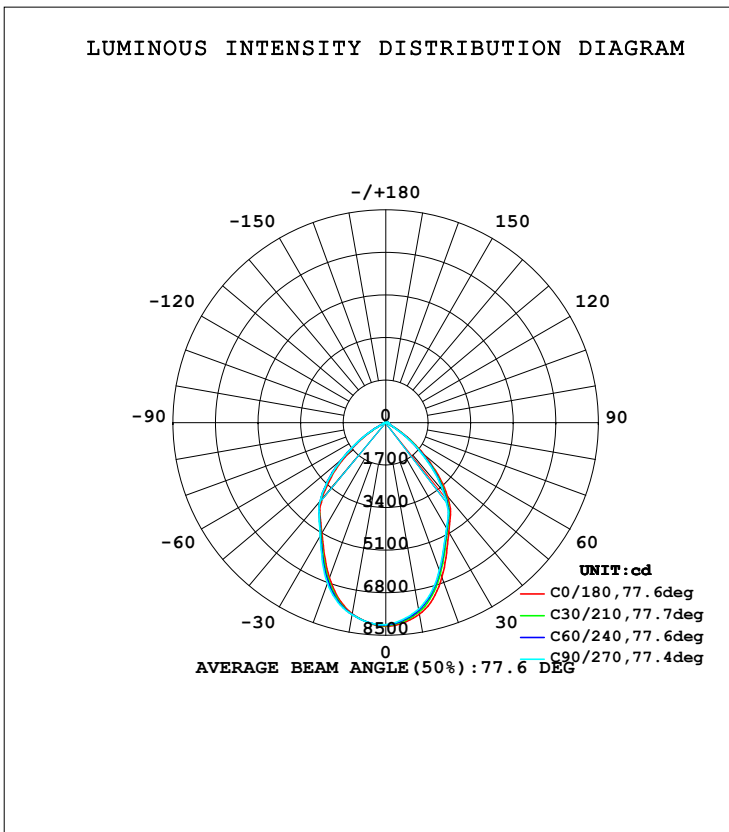


LUMINAIRE PHOTOMETRIC TEST REPORT

Test:U:220.3V I:0.4810A P:101.5W PF:0.9580 Lamp Flux:12019.7x1 lm		
NAME: HL-100W-80°	TYPE:	WEIGHT:
SPEC.:	DIM.:	SERIAL No.:
MFR.:	SUR.:	PROTECTION ANGLE:

DATA OF LAMP		PHOTOMETRIC DATA Eff: 118.42 lm/W			
MODEL		I <sub>max</sub> (cd)	8138	S/MH (C0/180)	0.98
NOMINAL POWER (W)		LOR (%)	100.0	S/MH (C90/270)	1.02
RATED VOLTAGE (V)		TOTAL FLUX (lm)	12020	η UP, DN (C0-180)	0.3, 47.6
NOMINAL FLUX (lm)	12019.7	CIE CLASS	DIRECT	η UP, DN (C180-360)	0.2, 51.9
LAMPS INSIDE	1	η up (%)	0.5	CIBSE SHR NOM	1.00
TEST VOLTAGE (V)		η down (%)	99.5	CIBSE SHR MAX	1.15



C Range: 0 - 360DEG  
 C Interval: 15.0DEG  
 Test Speed: HIGH  
 Temperature: 25.3DEG  
 Operators: yu  
 Test Date: 2016-10-10

γ Range: 0 - 180DEG  
 γ Interval: 1.0DEG  
 Test System: EVERFINE GO-2000B\_V1 SYSTEM V2.0.287  
 Humidity: 65.0%  
 Test Distance: 8.000m [K=1.0000]  
 Remarks:

## ZONAL FLUX DIAGRAM

## ZONAL FLUX DIAGRAM:

$\gamma$	C0	C45	C90	C135	C180	C225	C270	C315	$\gamma$	$\Phi$ zone	$\Phi$ total	%lum,lamp
10	7771	7655	7567	7567	7754	7770	7790	7756	0- 10	751.5	751.5	6.25,6.25
20	6573	6374	6278	6341	6598	6702	6822	6773	10- 20	2022	2774	23.1,23.1
30	5048	4922	4870	4918	5120	5179	5252	5191	20- 30	2650	5424	45.1,45.1
40	3856	3674	3558	3627	3958	4058	4084	4000	30- 40	2806	8229	68.5,68.5
50	2010	1856	1763	1827	2133	2303	2303	2215	40- 50	2286	10515	87.5,87.5
60	452.0	357.9	329.9	364.2	533.3	642.2	663.0	605.5	50- 60	1096	11611	96.6,96.6
70	118.4	114.2	120.0	125.6	114.9	116.0	118.5	114.6	60- 70	207.6	11818	98.3,98.3
80	70.89	70.98	78.24	76.09	54.91	52.74	54.12	51.72	70- 80	91.19	11909	99.1,99.1
90	55.00	55.52	54.80	55.97	33.17	30.20	30.54	31.09	80- 90	56.21	11965	99.5,99.5
100	60.45	62.09	59.59	67.20	49.62	37.71	37.64	36.89	90-100	51.39	12017	100,100
110	0	0	0	0	0	0	0	0	100-110	2.774	12020	100,100
120	0	0	0	0	0	0	0	0	110-120	0	12020	100,100
130	0	0	0	0	0	0	0	0	120-130	0	12020	100,100
140	0	0	0	0	0	0	0	0	130-140	0	12020	100,100
150	0	0	0	0	0	0	0	0	140-150	0	12020	100,100
160	0	0	0	0	0	0	0	0	150-160	0	12020	100,100
170	0	0	0	0	0	0	0	0	160-170	0	12020	100,100
180	0	0	0	0	0	0	0	0	170-180	0	12020	100,100
DEG	LUMINOUS INTENSITY:cd									UNIT:lm		

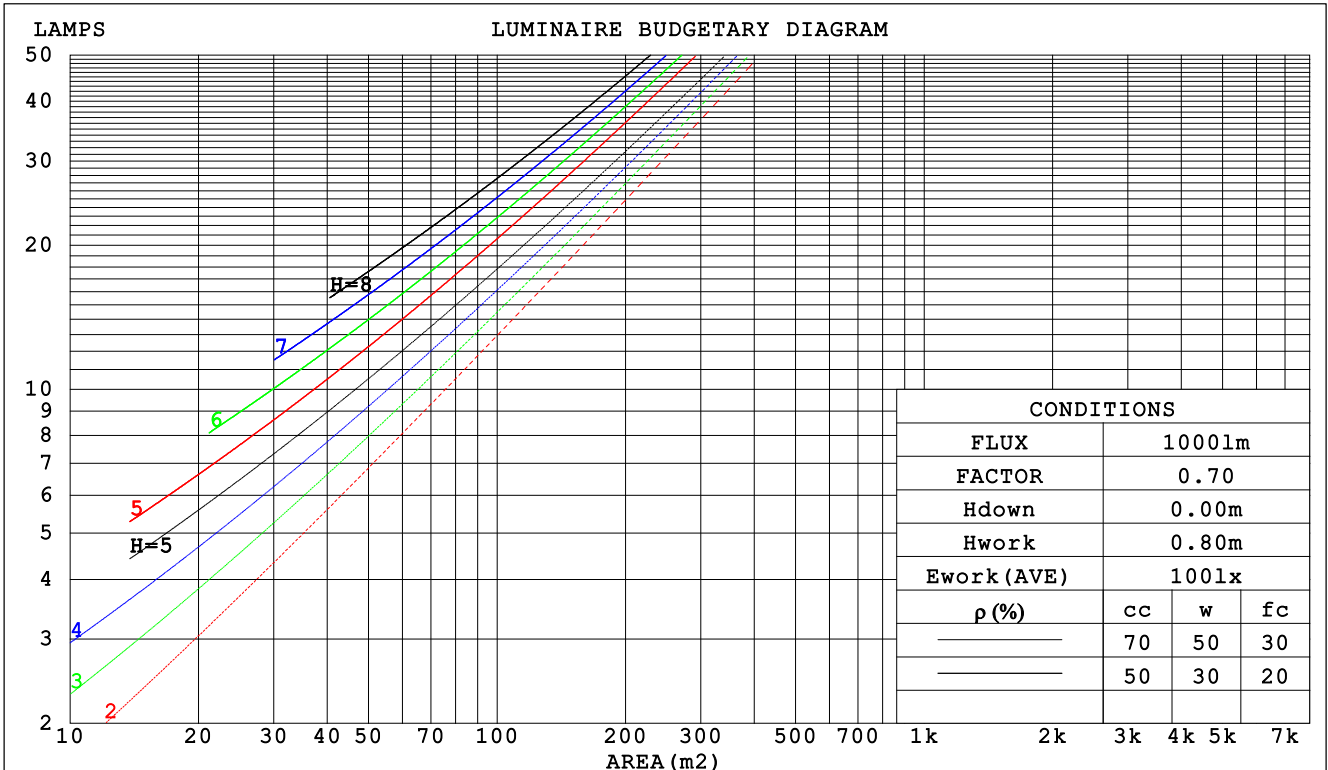
C Range: 0 - 360DEG  
C Interval: 15.0DEG  
Test Speed: HIGH  
Temperature:25.3DEG  
Operators:yu  
Test Date:2016-10-10

$\gamma$  Range: 0 - 180DEG  
 $\gamma$  Interval: 1.0DEG  
Test System:EVERFINE GO-2000B\_V1 SYSTEM V2.0.287  
Humidity:65.0%  
Test Distance:8.000m [K=1.0000]  
Remarks:

CU AND LUMINAIRE BUDGETARY ESTIMATE DIAGRAM

Test:U:220.3V I:0.4810A P:101.5W PF:0.9580 Lamp Flux:12019.7x1 lm		
NAME: HL-100W-80°	TYPE:	WEIGHT:
SPEC.:	DIM.:	SERIAL No.:
MFR.:	SUR.:	PROTECTION ANGLE:

ρcc	80%			70%			50%			30%			10%			0
ρw	50%	30%	10%	50%	30%	10%	50%	30%	10%	50%	30%	10%	50%	30%	10%	0
ρfc	20%			20%			20%			20%			20%			0
RCR	RCR:Room Cavity Ratio															
	Coefficients of Utilization(CU)															
0.0	1.19	1.19	1.19	1.16	1.16	1.16	1.11	1.11	1.11	1.06	1.06	1.06	1.02	1.02	1.02	.00
1.0	1.08	1.05	1.03	1.06	1.03	1.01	1.02	.99	.98	.98	.96	.95	.95	.93	.92	.90
2.0	.98	.93	.89	.97	.92	.88	.93	.89	.86	.90	.87	.84	.87	.85	.82	.80
3.0	.90	.83	.78	.88	.82	.78	.85	.80	.76	.83	.78	.75	.80	.77	.74	.72
4.0	.82	.75	.69	.80	.74	.69	.78	.72	.68	.76	.71	.67	.74	.70	.66	.65
5.0	.75	.67	.62	.74	.67	.62	.72	.66	.61	.70	.65	.61	.68	.64	.60	.58
6.0	.69	.61	.56	.68	.61	.56	.66	.60	.55	.64	.59	.55	.63	.58	.54	.53
7.0	.63	.56	.51	.62	.55	.50	.61	.55	.50	.60	.54	.50	.58	.53	.49	.48
8.0	.58	.51	.46	.58	.51	.46	.56	.50	.46	.55	.50	.46	.54	.49	.45	.44
9.0	.54	.47	.42	.54	.47	.42	.53	.46	.42	.52	.46	.42	.51	.45	.42	.40
10.0	.50	.44	.39	.50	.43	.39	.49	.43	.39	.48	.43	.39	.47	.42	.38	.37



C Range: 0 - 360DEG  
 C Interval: 15.0DEG  
 Test Speed: HIGH  
 Temperature:25.3DEG  
 Operators:yu  
 Test Date:2016-10-10

γ Range: 0 - 180DEG  
 γ Interval: 1.0DEG  
 Test System:EVERFINE GO-2000B\_V1 SYSTEM V2.0.287  
 Humidity:65.0%  
 Test Distance:8.000m [K=1.0000]  
 Remarks:

WEC AND CCEC

Test:U:220.3V I:0.4810A P:101.5W PF:0.9580 Lamp Flux:12019.7x1 lm		
NAME: HL-100W-80°	TYPE:	WEIGHT:
SPEC.:	DIM.:	SERIAL No.:
MFR.:	SUR.:	PROTECTION ANGLE:

ρcc	80%			70%			50%			30%			10%			0
ρw	50%	30%	10%	50%	30%	10%	50%	30%	10%	50%	30%	10%	50%	30%	10%	0
ρfc	20%			20%			20%			20%			20%			0
RCR	RCR:Room Cavity Ratio						Wall Exitance Coefficients (WEC)									
0.0																
1.0	.220	.125	.040	.213	.122	.039	.200	.115	.037	.188	.109	.035	.177	.103	.033	
2.0	.214	.117	.036	.208	.114	.035	.196	.109	.034	.186	.104	.033	.176	.100	.031	
3.0	.204	.109	.033	.199	.106	.032	.189	.102	.031	.180	.099	.030	.172	.095	.029	
4.0	.194	.101	.030	.189	.099	.029	.181	.096	.029	.173	.093	.028	.165	.090	.027	
5.0	.184	.094	.027	.180	.092	.027	.172	.090	.026	.165	.087	.026	.159	.085	.025	
6.0	.174	.087	.025	.171	.086	.025	.164	.084	.024	.158	.082	.024	.152	.080	.024	
7.0	.165	.082	.023	.162	.081	.023	.156	.079	.023	.151	.077	.022	.145	.075	.022	
8.0	.157	.077	.022	.154	.076	.021	.149	.074	.021	.144	.073	.021	.139	.071	.021	
9.0	.149	.072	.020	.147	.072	.020	.142	.070	.020	.137	.069	.020	.133	.068	.020	
10.0	.142	.068	.019	.140	.068	.019	.135	.066	.019	.131	.065	.019	.127	.064	.018	

ρcc	80%			70%			50%			30%			10%			0
ρw	50%	30%	10%	50%	30%	10%	50%	30%	10%	50%	30%	10%	50%	30%	10%	0
ρfc	20%			20%			20%			20%			20%			0
RCR	RCR:Room Cavity Ratio						Ceiling Cavity Exitance Coefficients (CCEC)									
0.0	.194	.194	.194	.166	.166	.166	.113	.113	.113	.065	.065	.065	.021	.021	.021	
1.0	.178	.160	.145	.152	.138	.125	.104	.095	.086	.060	.055	.050	.019	.018	.016	
2.0	.165	.136	.111	.142	.117	.096	.097	.081	.067	.056	.047	.039	.018	.015	.013	
3.0	.155	.117	.087	.133	.101	.076	.091	.070	.053	.053	.041	.031	.017	.013	.010	
4.0	.147	.103	.070	.126	.089	.061	.087	.062	.043	.050	.036	.025	.016	.012	.008	
5.0	.139	.092	.058	.120	.080	.050	.082	.056	.035	.048	.033	.021	.015	.011	.007	
6.0	.133	.083	.048	.114	.072	.042	.079	.051	.030	.046	.030	.018	.015	.010	.006	
7.0	.126	.076	.041	.109	.066	.036	.075	.046	.026	.044	.027	.015	.014	.009	.005	
8.0	.121	.070	.036	.104	.061	.031	.072	.043	.022	.042	.025	.013	.014	.008	.004	
9.0	.115	.065	.032	.099	.057	.028	.069	.040	.020	.040	.024	.012	.013	.008	.004	
10.0	.111	.061	.028	.095	.053	.025	.066	.037	.018	.039	.022	.010	.013	.007	.003	

C Range: 0 - 360DEG  
 C Interval: 15.0DEG  
 Test Speed: HIGH  
 Temperature:25.3DEG  
 Operators:yu  
 Test Date:2016-10-10

γ Range: 0 - 180DEG  
 γ Interval: 1.0DEG  
 Test System:EVERFINE GO-2000B\_V1 SYSTEM V2.0.287  
 Humidity:65.0%  
 Test Distance:8.000m [K=1.0000]  
 Remarks:

## UGR(Unified Glare Rating) Table

Test:U:220.3V I:0.4810A P:101.5W PF:0.9580 Lamp Flux:12019.7x1 lm										
NAME: HL-100W-80°					TYPE:			WEIGHT:		
SPEC.:					DIM.:			SERIAL No.:		
MFR.:					SUR.:			PROTECTION ANGLE:		
ceiling/cavity	0.7	0.7	0.5	0.5	0.3	0.7	0.7	0.5	0.5	0.3
walls	0.5	0.3	0.5	0.3	0.3	0.5	0.3	0.5	0.3	0.3
working plane	0.2	0.2	0.2	0.2	0.2	0.2	0.2	0.2	0.2	0.2
Room dimensions	Viewed crosswise					Viewed endwise				
x = 2H y = 2H	25.0	26.2	25.3	26.4	26.6	24.6	25.8	24.9	26.0	26.2
3H	24.9	26.0	25.2	26.2	26.4	24.5	25.6	24.8	25.8	26.0
4H	24.8	25.9	25.1	26.1	26.3	24.4	25.5	24.7	25.7	25.9
6H	24.8	25.7	25.1	26.0	26.3	24.4	25.4	24.7	25.6	25.9
8H	24.8	25.7	25.1	26.0	26.2	24.4	25.3	24.7	25.6	25.9
12H	24.8	25.7	25.1	25.9	26.2	24.4	25.3	24.8	25.6	25.9
4H 2H	24.8	25.9	25.1	26.1	26.4	24.4	25.5	24.7	25.7	26.0
3H	24.7	25.6	25.1	25.9	26.2	24.3	25.2	24.7	25.5	25.8
4H	24.7	25.5	25.1	25.8	26.1	24.3	25.1	24.7	25.4	25.8
6H	24.7	25.4	25.1	25.7	26.1	24.3	25.0	24.7	25.4	25.7
8H	24.7	25.3	25.1	25.7	26.1	24.4	25.0	24.8	25.4	25.8
12H	24.7	25.3	25.2	25.7	26.1	24.4	25.0	24.9	25.4	25.8
8H 4H	24.6	25.2	25.0	25.6	26.0	24.2	24.9	24.6	25.2	25.6
6H	24.6	25.2	25.1	25.6	26.0	24.3	24.8	24.7	25.2	25.7
8H	24.7	25.1	25.1	25.6	26.0	24.4	24.8	24.8	25.3	25.7
12H	24.8	25.2	25.2	25.6	26.1	24.5	24.9	25.0	25.4	25.9
12H 4H	24.5	25.1	25.0	25.5	25.9	24.2	24.8	24.6	25.2	25.6
6H	24.6	25.1	25.1	25.5	25.9	24.3	24.7	24.7	25.2	25.6
8H	24.7	25.1	25.1	25.5	26.0	24.4	24.8	24.9	25.2	25.7
Variations with the observer position at spacings:										
S = 1.0H	+ 1.6 / - 2.8					+ 1.7 / - 3.3				
1.5H	+ 1.0 / - 2.0					+ 1.2 / - 2.0				
2.0H	+ 3.8 / - 6.5					+ 3.8 / - 5.7				

CIE Pub.117 Corrected 12020 lm Total Lamp Luminous Flux. (8log(F/F0) = 8.6)

C Range: 0 - 360DEG  
C Interval: 15.0DEG  
Test Speed: HIGH  
Temperature:25.3DEG  
Operators:yu  
Test Date:2016-10-10

$\gamma$  Range: 0 - 180DEG  
 $\gamma$  Interval: 1.0DEG  
Test System:EVERFINE GO-2000B\_V1 SYSTEM V2.0.287  
Humidity:65.0%  
Test Distance:8.000m [K=1.0000]  
Remarks:

## UTILIZATION FACTORS TABLE

Test:U:220.3V I:0.4810A P:101.5W PF:0.9580 Lamp Flux:12019.7x1 lm		
NAME: HL-100W-80°	TYPE:	WEIGHT:
SPEC.:	DIM.:	SERIAL No.:
MFR.:	SUR.:	PROTECTION ANGLE:

REFLECTANCE										
Ceiling	0.8	0.8	0.8	0.7	0.7	0.7	0.5	0.5	0.5	0
Walls	0.7	0.5	0.3	0.7	0.5	0.3	0.7	0.5	0.3	0
Working plane	0.2	0.2	0.2	0.2	0.2	0.2	0.2	0.2	0.2	0
ROOM INDEX	UTILIZATION FACTORS (PERCENT) $k(RI) \times RCR = 5$									
k = 0.60	71	62	56	70	62	56	69	61	56	51
0.80	81	72	67	80	72	67	79	71	66	61
1.00	89	81	75	88	80	75	86	81	74	69
1.25	95	87	82	93	87	82	91	85	81	76
1.50	99	92	87	97	91	86	95	89	85	80
2.00	103	98	93	102	96	92	99	94	91	85
2.50	106	100	96	104	99	95	101	97	93	87
3.00	108	103	100	106	102	98	102	99	96	89
4.00	111	107	103	108	105	102	104	102	99	91
5.00	112	109	106	110	107	104	106	103	101	93
ROOM INDEX	UF(total)									Direct
According to DIN EN 13032-2 2004			Suspended				SHRNOM = 1.25			

C Range: 0 - 360DEG  
 C Interval: 15.0DEG  
 Test Speed: HIGH  
 Temperature:25.3DEG  
 Operators:yu  
 Test Date:2016-10-10

$\gamma$  Range: 0 - 180DEG  
 $\gamma$  Interval: 1.0DEG  
 Test System:EVERFINE GO-2000B\_V1 SYSTEM V2.0.287  
 Humidity:65.0%  
 Test Distance:8.000m [K=1.0000]  
 Remarks:

ISOCANDELA DIAGRAM

Test:U:220.3V I:0.4810A P:101.5W PF:0.9580 Lamp Flux:12019.7x1 lm		
NAME: HL-100W-80°	TYPE:	WEIGHT:
SPEC.:	DIM.:	SERIAL No.:
MFR.:	SUR.:	PROTECTION ANGLE:

Conical surface Flux(90deg):

9497.9 lm

%lum = 79.0%

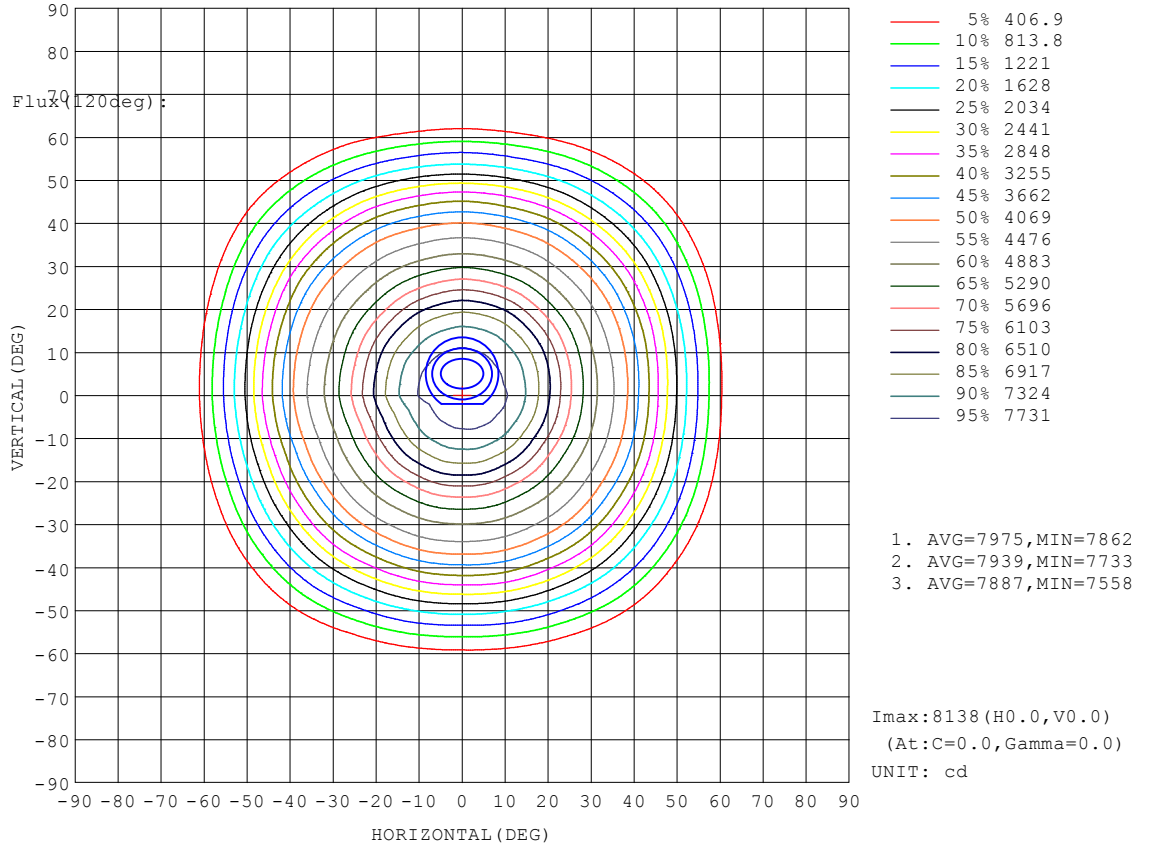
%lamp = 79.0%

Conical surface Flux(20deg):

11611 lm

%lum = 96.6%

%lamp = 96.6%

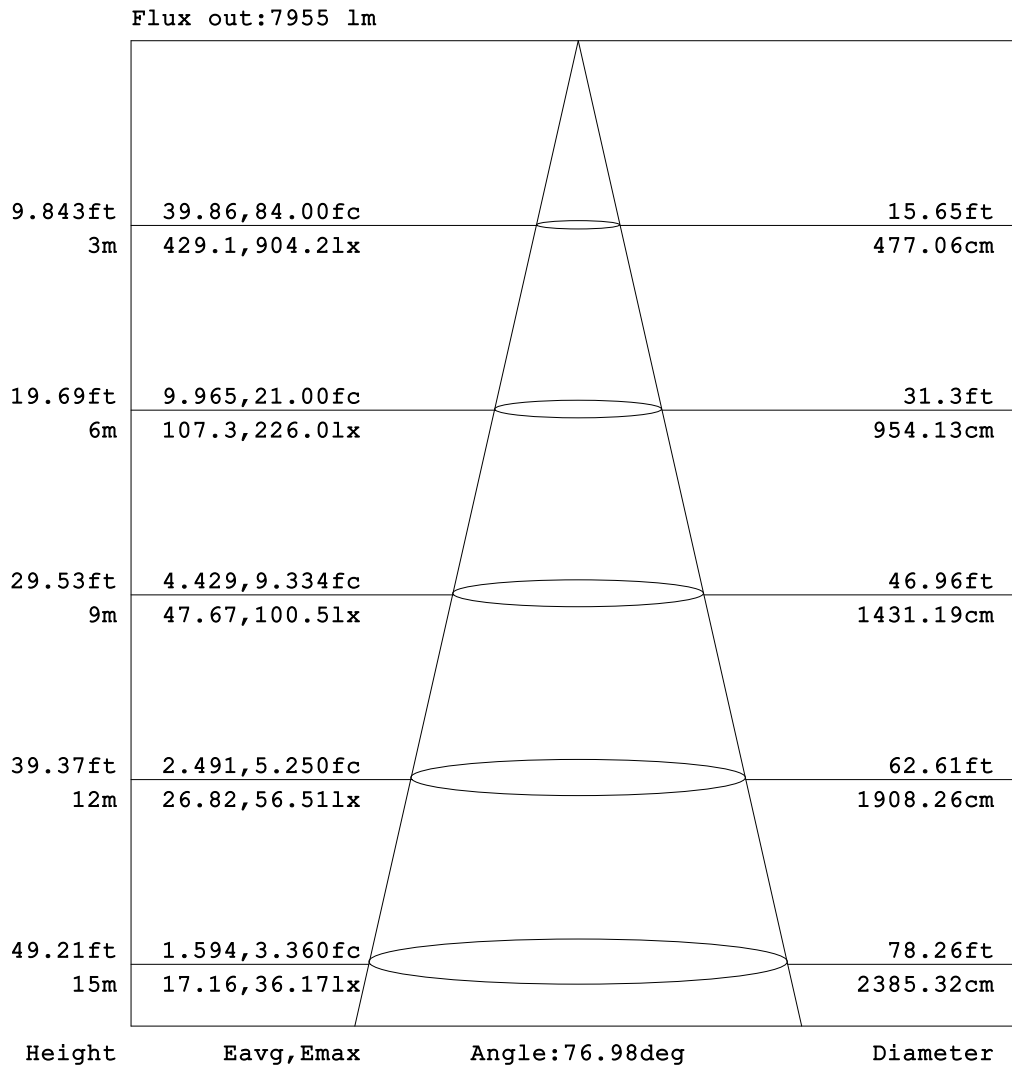


C Range: 0 - 360DEG  
 C Interval: 15.0DEG  
 Test Speed: HIGH  
 Temperature:25.3DEG  
 Operators:yu  
 Test Date:2016-10-10

γ Range: 0 - 180DEG  
 γ Interval: 1.0DEG  
 Test System:EVERFINE GO-2000B\_V1 SYSTEM V2.0.287  
 Humidity:65.0%  
 Test Distance:8.000m [K=1.0000]  
 Remarks:

AAI Figure

Test:U:220.3V I:0.4810A P:101.5W PF:0.9580 Lamp Flux:12019.7x1 lm		
NAME: HL-100W-80°	TYPE:	WEIGHT:
SPEC.:	DIM.:	SERIAL No.:
MFR.:	SUR.:	PROTECTION ANGLE:



Note: The Curves indicate the illuminated area and the average illumination when the luminaire is at different distance.

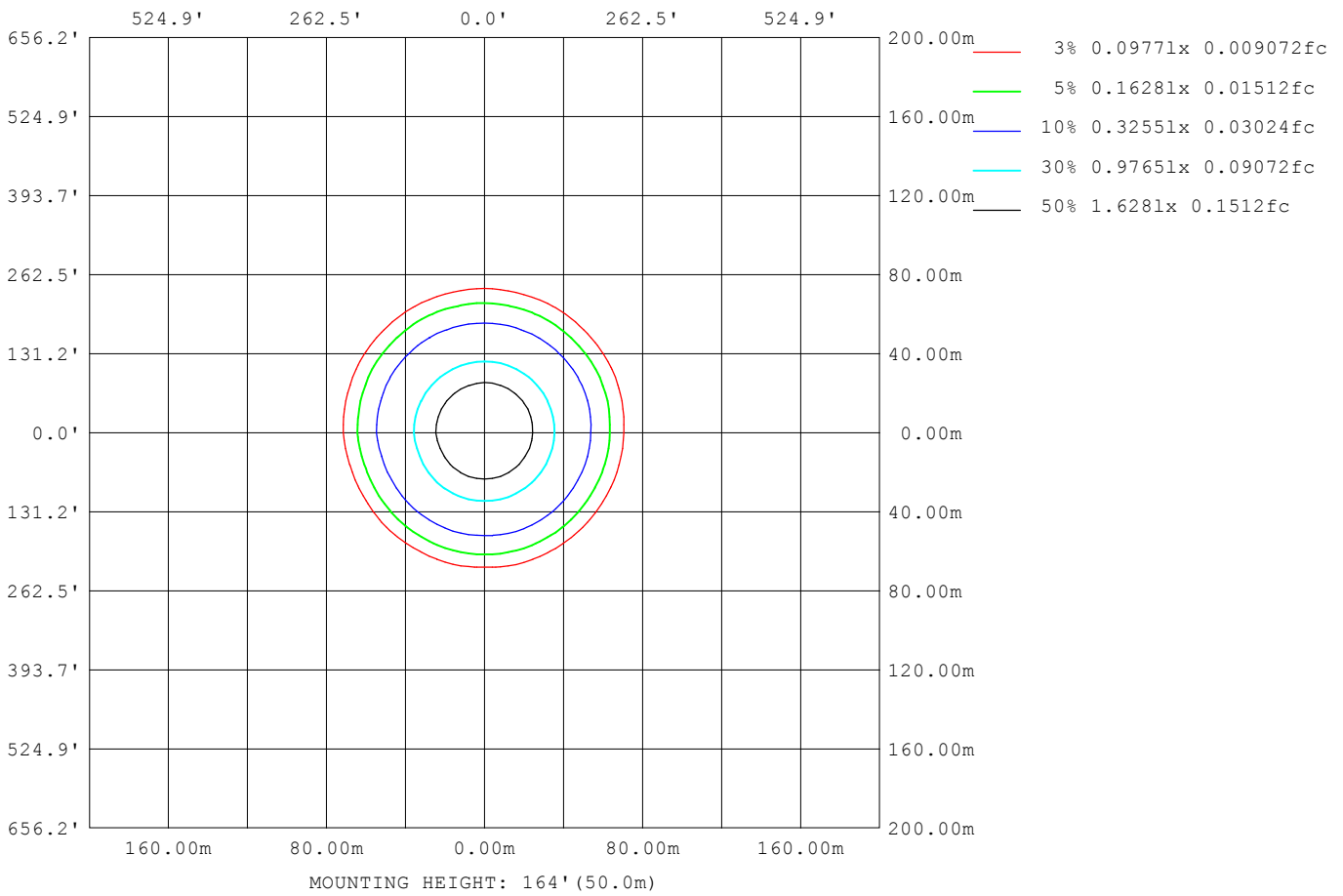
C Range: 0 - 360DEG  
 C Interval: 15.0DEG  
 Test Speed: HIGH  
 Temperature: 25.3DEG  
 Operators: yu  
 Test Date: 2016-10-10

γ Range: 0 - 180DEG  
 γ Interval: 1.0DEG  
 Test System: EVERFINE GO-2000B\_V1 SYSTEM V2.0.287  
 Humidity: 65.0%  
 Test Distance: 8.000m [K=1.0000]  
 Remarks:



ISOLUX DIAGRAM

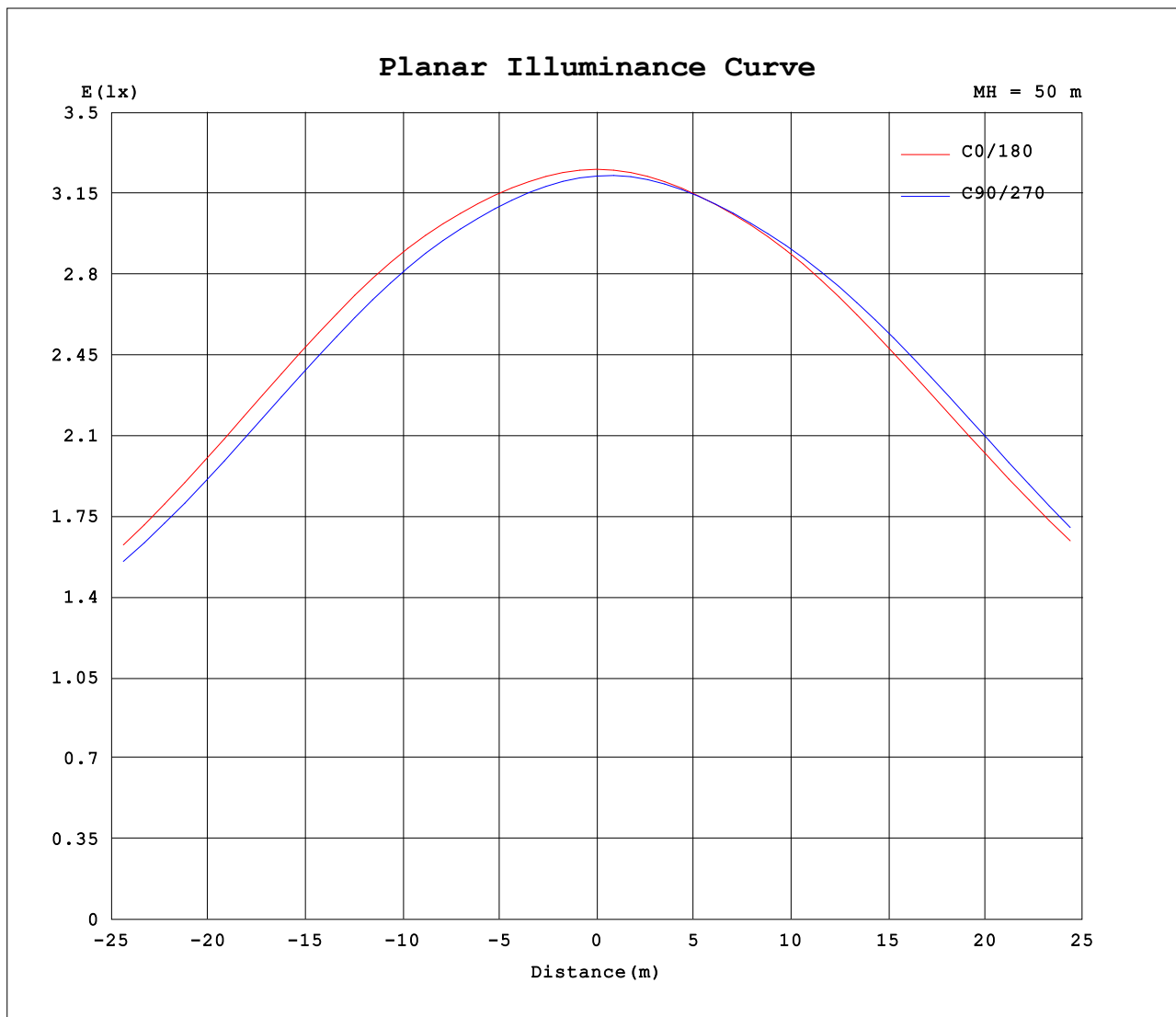
Test:U:220.3V I:0.4810A P:101.5W PF:0.9580 Lamp Flux:12019.7x1 lm		
NAME: HL-100W-80°	TYPE:	WEIGHT:
SPEC.:	DIM.:	SERIAL No.:
MFR.:	SUR.:	PROTECTION ANGLE:



C Range: 0 - 360DEG  
 C Interval: 15.0DEG  
 Test Speed: HIGH  
 Temperature:25.3DEG  
 Operators:yu  
 Test Date:2016-10-10

γ Range: 0 - 180DEG  
 γ Interval: 1.0DEG  
 Test System:EVERFINE GO-2000B\_V1 SYSTEM V2.0.287  
 Humidity:65.0%  
 Test Distance:8.000m [K=1.0000]  
 Remarks:

Planar Illuminance Curve



C Range: 0 - 360DEG  
 C Interval: 15.0DEG  
 Test Speed: HIGH  
 Temperature: 25.3DEG  
 Operators: yu  
 Test Date: 2016-10-10

γ Range: 0 - 180DEG  
 γ Interval: 1.0DEG  
 Test System: EVERFINE GO-2000B\_V1 SYSTEM V2.0.287  
 Humidity: 65.0%  
 Test Distance: 8.000m [K=1.0000]  
 Remarks:

LUMINOUS DISTRIBUTION INTENSITY DATA

Test:U:220.3V I:0.4810A P:101.5W PF:0.9580 Lamp Flux:12019.7x1 lm		
NAME: HL-100W-80°	TYPE:	WEIGHT:
SPEC.:	DIM.:	SERIAL No.:
MFR.:	SUR.:	PROTECTION ANGLE:

Table--1

UNIT: cd

C (DEG) γ (DEG)	0	15	30	45	60	75	90	105	120	135	150	165	180	195	210	225	240	255	270
0	8138	8122	8109	8097	8086	8076	8067	8059	8051	8045	8037	8032	8138	8122	8109	8097	8086	8076	8067
5	8030	8001	7970	7954	7927	7917	7893	7889	7879	7881	7877	7884	8024	8016	8021	8011	8014	8008	8011
10	7771	7735	7679	7655	7612	7598	7567	7567	7553	7567	7564	7589	7754	7757	7775	7770	7784	7779	7790
15	7293	7237	7152	7121	7063	7056	7020	7034	7021	7049	7045	7080	7280	7297	7348	7352	7388	7395	7426
20	6573	6504	6403	6374	6314	6311	6278	6305	6298	6341	6339	6384	6598	6622	6688	6702	6757	6774	6822
25	5753	5689	5597	5574	5522	5520	5491	5518	5515	5559	5561	5607	5813	5835	5903	5915	5968	5979	6026
30	5048	5002	4936	4922	4888	4889	4870	4889	4887	4918	4919	4951	5120	5131	5180	5179	5215	5215	5252
35	4504	4473	4420	4416	4390	4394	4378	4394	4387	4412	4413	4440	4580	4583	4615	4609	4631	4622	4648
40	3856	3813	3693	3674	3608	3604	3558	3585	3578	3627	3646	3749	3958	3989	4056	4058	4094	4062	4084
45	2973	2919	2811	2794	2715	2736	2678	2691	2686	2762	2767	2890	3084	3134	3255	3261	3291	3262	3282
50	2010	1961	1864	1856	1805	1783	1763	1778	1771	1827	1842	1930	2133	2205	2287	2303	2345	2299	2303
55	1192	1154	1100	1062	1035	1028	990	1009	1004	1067	1074	1156	1284	1342	1404	1419	1449	1420	1431
60	452	428	360	358	340	341	330	337	326	364	376	430	533	575	645	642	651	639	663
65	166	161	154	154	148	152	154	157	158	165	168	176	173	172	176	174	177	175	179
70	118	115	113	114	116	119	120	123	123	126	126	128	115	114	117	116	116	115	118
75	89.2	87.9	86.8	88.1	88.9	91.1	91.7	93.2	93.4	94.9	94.8	95.5	78.4	77.5	79.9	78.5	78.3	77.4	79.7
80	70.9	70.5	69.8	71.0	74.0	77.5	78.2	79.1	77.5	76.1	73.9	74.3	54.9	53.5	54.8	52.7	53.9	53.2	54.1
85	59.5	60.0	60.7	62.0	63.1	65.2	65.0	65.7	64.8	64.5	63.3	62.5	40.7	38.6	38.6	38.5	39.6	38.8	39.3
90	55.0	56.7	56.3	55.5	54.7	54.8	54.8	54.9	54.8	56.0	57.3	59.9	33.2	31.5	30.9	30.2	31.1	30.1	30.5
95	58.0	59.4	60.7	60.4	60.3	58.8	56.7	57.5	59.7	60.6	61.8	60.3	36.9	35.5	33.5	32.2	33.8	33.3	32.7
100	60.5	64.5	62.8	62.1	60.8	59.7	59.6	59.8	61.3	67.2	71.3	72.6	49.6	44.3	39.6	37.7	36.9	37.3	37.6
105	0.00	0.00	0.00	0.00	0.00	0.00	0.00	0.00	0.00	0.00	0.00	0.00	0.00	0.00	0.00	0.00	0.00	0.00	0.00
110	0.00	0.00	0.00	0.00	0.00	0.00	0.00	0.00	0.00	0.00	0.00	0.00	0.00	0.00	0.00	0.00	0.00	0.00	0.00
115	0.00	0.00	0.00	0.00	0.00	0.00	0.00	0.00	0.00	0.00	0.00	0.00	0.00	0.00	0.00	0.00	0.00	0.00	0.00
120	0.00	0.00	0.00	0.00	0.00	0.00	0.00	0.00	0.00	0.00	0.00	0.00	0.00	0.00	0.00	0.00	0.00	0.00	0.00
125	0.00	0.00	0.00	0.00	0.00	0.00	0.00	0.00	0.00	0.00	0.00	0.00	0.00	0.00	0.00	0.00	0.00	0.00	0.00
130	0.00	0.00	0.00	0.00	0.00	0.00	0.00	0.00	0.00	0.00	0.00	0.00	0.00	0.00	0.00	0.00	0.00	0.00	0.00
135	0.00	0.00	0.00	0.00	0.00	0.00	0.00	0.00	0.00	0.00	0.00	0.00	0.00	0.00	0.00	0.00	0.00	0.00	0.00
140	0.00	0.00	0.00	0.00	0.00	0.00	0.00	0.00	0.00	0.00	0.00	0.00	0.00	0.00	0.00	0.00	0.00	0.00	0.00
145	0.00	0.00	0.00	0.00	0.00	0.00	0.00	0.00	0.00	0.00	0.00	0.00	0.00	0.00	0.00	0.00	0.00	0.00	0.00
150	0.00	0.00	0.00	0.00	0.00	0.00	0.00	0.00	0.00	0.00	0.00	0.00	0.00	0.00	0.00	0.00	0.00	0.00	0.00
155	0.00	0.00	0.00	0.00	0.00	0.00	0.00	0.00	0.00	0.00	0.00	0.00	0.00	0.00	0.00	0.00	0.00	0.00	0.00
160	0.00	0.00	0.00	0.00	0.00	0.00	0.00	0.00	0.00	0.00	0.00	0.00	0.00	0.00	0.00	0.00	0.00	0.00	0.00
165	0.00	0.00	0.00	0.00	0.00	0.00	0.00	0.00	0.00	0.00	0.00	0.00	0.00	0.00	0.00	0.00	0.00	0.00	0.00
170	0.00	0.00	0.00	0.00	0.00	0.00	0.00	0.00	0.00	0.00	0.00	0.00	0.00	0.00	0.00	0.00	0.00	0.00	0.00
175	0.00	0.00	0.00	0.00	0.00	0.00	0.00	0.00	0.00	0.00	0.00	0.00	0.00	0.00	0.00	0.00	0.00	0.00	0.00
180	0.00	0.00	0.00	0.00	0.00	0.00	0.00	0.00	0.00	0.00	0.00	0.00	0.00	0.00	0.00	0.00	0.00	0.00	0.00

C Range: 0 - 360DEG  
 C Interval: 15.0DEG  
 Test Speed: HIGH  
 Temperature:25.3DEG  
 Operators:yu  
 Test Date:2016-10-10

γ Range: 0 - 180DEG  
 γ Interval: 1.0DEG  
 Test System:EVERFINE GO-2000B\_V1 SYSTEM V2.0.287  
 Humidity:65.0%  
 Test Distance:8.000m [K=1.0000]  
 Remarks:

LUMINOUS DISTRIBUTION INTENSITY DATA

Test:U:220.3V I:0.4810A P:101.5W PF:0.9580 Lamp Flux:12019.7x1 lm		
NAME: HL-100W-80°	TYPE:	WEIGHT:
SPEC.:	DIM.:	SERIAL No.:
MFR.:	SUR.:	PROTECTION ANGLE:

Table--2

UNIT: cd

C (DEG) γ (DEG)	285	300	315	330	345														
0	8059	8051	8045	8037	8032														
5	8002	8001	7985	7978	7958														
10	7779	7780	7756	7750	7728														
15	7416	7422	7388	7375	7321														
20	6814	6823	6773	6743	6660														
25	6011	6020	5957	5928	5844														
30	5234	5240	5191	5173	5107														
35	4632	4637	4601	4590	4542														
40	4047	4052	4000	3987	3922														
45	3222	3247	3163	3155	3065														
50	2274	2271	2215	2208	2135														
55	1387	1424	1363	1363	1295														
60	637	649	605	589	546														
65	177	176	174	169	160														
70	115	116	115	111	104														
75	76.2	77.7	77.2	75.5	70.6														
80	51.7	52.2	51.7	51.9	50.1														
85	38.0	38.1	37.6	38.1	37.8														
90	29.6	30.0	31.1	30.7	31.1														
95	33.0	32.3	33.2	34.5	34.5														
100	37.0	37.8	36.9	38.8	38.9														
105	0.00	0.00	0.00	0.00	0.00														
110	0.00	0.00	0.00	0.00	0.00														
115	0.00	0.00	0.00	0.00	0.00														
120	0.00	0.00	0.00	0.00	0.00														
125	0.00	0.00	0.00	0.00	0.00														
130	0.00	0.00	0.00	0.00	0.00														
135	0.00	0.00	0.00	0.00	0.00														
140	0.00	0.00	0.00	0.00	0.00														
145	0.00	0.00	0.00	0.00	0.00														
150	0.00	0.00	0.00	0.00	0.00														
155	0.00	0.00	0.00	0.00	0.00														
160	0.00	0.00	0.00	0.00	0.00														
165	0.00	0.00	0.00	0.00	0.00														
170	0.00	0.00	0.00	0.00	0.00														
175	0.00	0.00	0.00	0.00	0.00														
180	0.00	0.00	0.00	0.00	0.00														

C Range: 0 - 360DEG  
 C Interval: 15.0DEG  
 Test Speed: HIGH  
 Temperature:25.3DEG  
 Operators:yu  
 Test Date:2016-10-10

γ Range: 0 - 180DEG  
 γ Interval: 1.0DEG  
 Test System:EVERFINE GO-2000B\_V1 SYSTEM V2.0.287  
 Humidity:65.0%  
 Test Distance:8.000m [K=1.0000]  
 Remarks: